



VESTA UNO

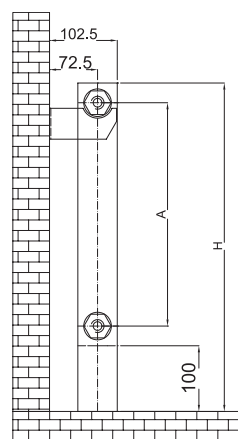
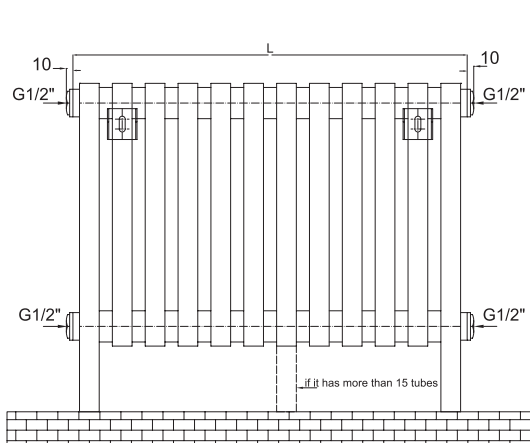
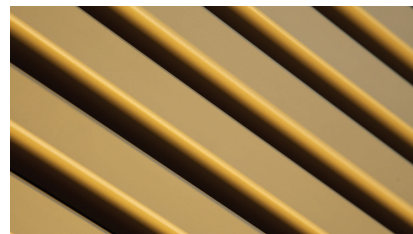
Valves are not included and must be ordered separately, if required.
Robineții nu sunt incluși și trebuie comandați separat, la cerere.



VESTA UNO

With its tubular construction, VESTA UNO makes an impact on any interior décor. Floor or wall mounted, VESTA UNO is suitable for home or workspaces, offering superb heat delivery. It can be personalized with finishes such as colours combination, chrome and stainless steel.

Prin construcția sa compactă, VESTA UNO este o prezență spectaculoasă în orice ambient. Poate fi montat vertical pe perete sau pe podea, VESTA UNO este disponibil în variantă vopsită, cromată sau inox.



Max. working pressure/
Presiune max. de lucru
7 bar



Max. working temperature/
Temperatură max. de lucru
90°C



Mounting kit included/
Kit montaj inclus:
K15 page 203



Factory pressure test/
Presiune de probă:
10 bar



Elements/
Elemente:
60x30mm

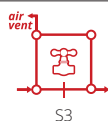
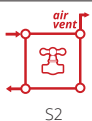
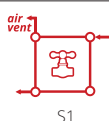


Collectors/
Colectori:
Ø42mm

Code/ Cod	Finish / Finisaj	Height/ Înălțime (H)	Length/ Lățime (L)	Centres/ Interax (A)	No el/Nr elemente	Weight/ Greutate	Volume/ Volum	OUTPUT/PUTERE TERMICĂ (watt)		
								Δt=30°C	Δt=50°C	Δt=60°C
		mm	mm	mm	pcs	kg	l	W	W	W
TK30N800*12V9010	RAL 9010 white/ alb*	800	600	640	12	19,40	13,40	434	828	1035
TK30N800*14V9010		800	700	640	14	22,60	15,60	505	963	1204
TK30N800*18V9010		800	900	640	18	28,90	20,00	646	1233	1541
TK30N1200*12V9010		1200	600	1040	12	29,20	20,80	672	1282	1602
TK30N1200*14V9010		1200	700	1040	14	34,00	24,20	782	1492	1866
TK30N1200*18V9010		1200	900	1040	18	43,60	31,10	1003	1913	2392
VESTA1800*12V9010		1800	600	1640	12	44,00	31,90	1028	1962	2453
VESTA1800*14V9010		1800	700	1640	14	51,20	37,20	1198	2286	2858
TK30N1800*18V9010		1800	900	1640	18	65,80	47,70	1537	2934	3668
TK30N800*12CR	Chrome / Cromat	800	600	640	12	19,40	13,40	334	637	796
TK30N800*14CR		800	700	640	14	22,60	15,60	388	741	926
TK30N800*18CR		800	900	640	18	28,90	20,00	497	948	1186
TK30N1200*12CR		1200	600	1040	12	29,20	20,80	517	986	1233
TK30N1200*14CR		1200	700	1040	14	34,00	24,20	602	1148	1435
TK30N1200*18CR		1200	900	1040	18	43,60	31,10	771	1472	1840
TK30N1800*12CR		1800	600	1640	12	44,00	31,90	791	1509	1887
TK30N1800*14CR		1800	700	1640	14	51,20	37,20	922	1759	2198
TK30N1800*18CR		1800	900	1640	18	65,80	47,70	1183	2257	2821
TK30B800*12XL	Stainless steel / INOX	800	600	640	12	19,40	13,40	322	614	767
TK30B800*14XL		800	700	640	14	22,60	15,60	374	714	892
TK30B800*18XL		800	900	640	18	28,90	20,00	479	913	1142
TK30B1200*12XL		1200	600	1040	12	29,20	20,80	498	950	1187
TK30B1200*14XL		1200	700	1040	14	34,00	24,20	579	1106	1382
TK30B1200*18XL		1200	900	1040	18	43,60	31,10	743	1417	1772
TK30B1800*12XL		1800	600	1640	12	44,00	31,90	762	1454	1817
TK30B1800*14XL		1800	700	1640	14	51,20	37,20	887	1694	2117
TK30B1800*18XL		1800	900	1640	18	65,80	47,70	1139	2173	2717

☛ We can make custom dimensions, after technical analysis. | Putem executa dimensiuni speciale, în urma unei analize tehnice.

Hydraulic connections/
Conexiuni hidraulice**



* For other colours, put your desired RADOX colour code instead of 9010 (standard white). For more details, see page 194
Pentru alte culori, se pune codul culorii RADOX dorite în locul codului 9010 (standard alb). Mai multe detalii la pag. 194

** When you order, you must mention the type of connection you require. The price changes according to the requirements.
Când comandați trebuie să menționați tipul de alimentare necesar. Prețul se modifică în funcție de cerințe.