

> R411TG

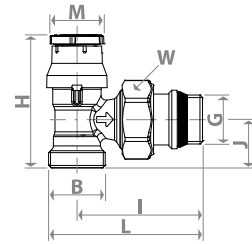


Angle valve with thermostatic option, with connection for copper, plastic or multilayer pipe adaptor.
 Fluid of use: water and glycol solutions (max. 30 %)
 Temperature range: 5÷110 °C
 Max. working pressure: 16 bar with manual handwheel; 10 bar in combination with thermostatic heads
 Max. differential pressure with thermostatic heads: 1,4 bar (3/8" - 1/2")

Materials
 Body and main components: UNI EN 12165 CW617N brass
 Monobloc command stem: stainless steel
 Worksite protection: PP-H
 Gaskets: EPDM

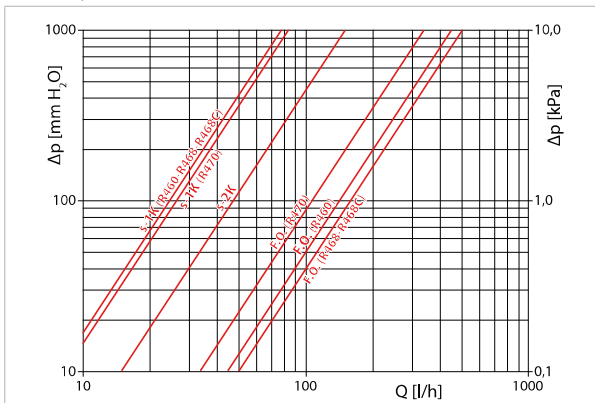
Product code	Connections	Finishing	Type of knob	Adaptors to use	Type of tail piece
R411X032	3/8" M (G, ISO 228) x base 16	Chrome plated brass	Worksite protection	R178, R178C, R179, R179AM	Tail piece with self-sealing
R411X033	1/2" M (G, ISO 228) x base 16	Chrome plated brass	Worksite protection	R178, R178C, R179, R179AM	Tail piece with self-sealing
R411X034	1/2" M (G, ISO 228) x base 18	Chrome plated brass	Worksite protection	R178, R178C, R179, R179AM	Tail piece with self-sealing

Product code	G x B	H [mm]	I [mm]	J [mm]	L [mm]	M [mm]	W [mm]
R411X032	3/8" x 16	56	53	21	66	23	30
R411X033	1/2" x 16	56	53	21	66	23	30
R411X034	1/2" x 18	56	53	21	66	23	30



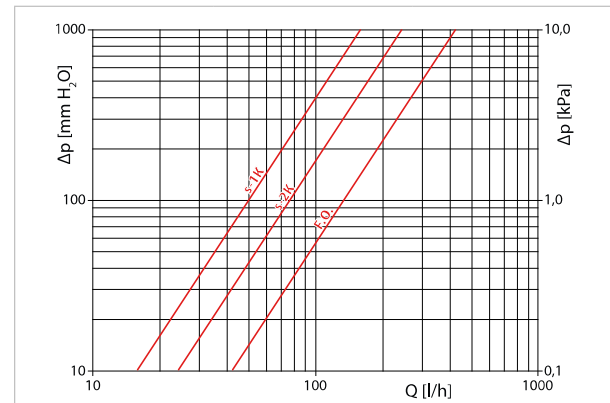
Hydraulic features

R411X032, R411X033



With R460 head			With R468-R468C head			With R470 head		
s-1K	s-2K	F.O.	s-1K	s-2K	F.O.	s-1K	s-2K	F.O.
0,25	0,47	1,49	0,25	0,47	1,61	0,27	0,47	1,14

R411X034



With R460, R468, R468C, R470, R462, R463 thermostatic heads		
s-1K	s-2K	F.O.
0,50	0,76	1,41